



FIREHOUSE NEWS



VOL. 1 SPRING 2025

www.bifd.org

MESSAGE FROM THE FIRE CHIEF

On behalf of the men and women of the Bainbridge Island Fire Department and the Board of Fire Commissioners, I am pleased to announce the relaunch of the Department's community newsletter. It's been over a decade since we've provided updates on your fire department in this way, and we are excited to do so again. 2024 was the busiest year for emergency responses in the Department's history, with over 3,900 calls. That's over 1,000 more calls per year than a decade ago. We've added new positions and replaced aging apparatus in the past



year, with more on the way. This year, we are excited to embark on an update to the Department's Strategic Plan as we chart the course for the next few years. We are proud to serve the community with the highest levels of compassion, trust, stewardship, innovation, and courage – our Core Values. We are committed to continuing to provide you with excellent service and look forward to providing opportunities for you to learn about and get to know your fire department in 2025!

Please visit us at one of our upcoming Open Houses. Stop by, meet your first responders and take a tour of the Station. I look forward to seeing you there!

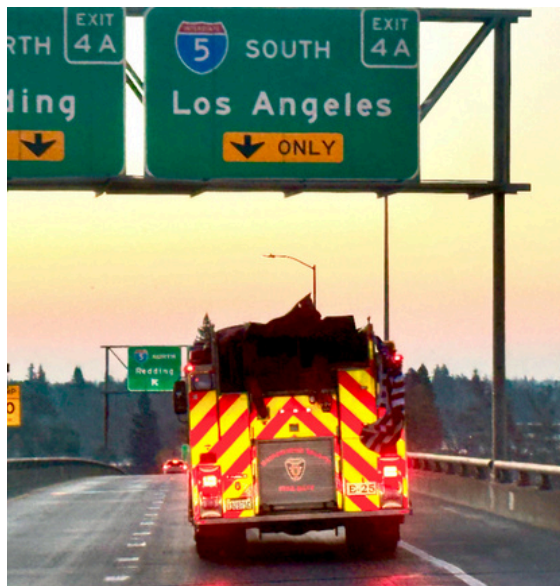
Jared Moravec, Fire Chief

OPEN house

Tue 7/1, 6:00 PM - 8:00 PM, Station 22
7934 NE Bucklin Hill Rd

Learn about future dates at www.bifd.org

BIFD ANSWERS THE CALL FOR HELP



On January 9, four of our firefighters responded to California as part of a Kitsap County Strike Team to assist at the Palisades Fire. Our crew spent 17 days deployed.

"This is likely a once in a career event for most of us, just given the relative closeness of the fires to such dense population areas. We are grateful to have had the support locally to assist in the Los Angeles, California fires. Many firefighters were ready and willing to answer that call. I cannot overstate the positive impact out of state reinforcements had on local morale. At our last operational briefing, there were 5,337 personnel assigned to the Palisades incident. Each had the mission of stabilization and preventing any further loss. The destruction is truly massive and hard to reconcile when juxtaposed with the beautiful coastal bluffs and ocean views. Our team from Bainbridge Island worked hard to represent our community to the highest standards just as we do here at home."

Lieutenant Matt Phillips



LT Matt Phillips, FF/EMTs Max Hale, Matt Williams and Danny Sackett

ADDRESS SIGNS 1234

We can't help you, if we can't find you! To ensure emergency responders find you without delay, address signs should be properly placed and visible day and night.

Please post your house numbers clearly at the head of your driveway. One blue address sign is available, at no charge, per residence. To learn more, contact tpeterson@bifd.org.

NEW TRANSPORT UNITS ARRIVE

Emergency medical transport units are the most used apparatus in our fleet logging over 3,100 responses in 2024! Recently we received delivery of two new units. They are 4WD, a new feature that will help us respond when road conditions are poor.



A "push back" is a traditional event where firefighters push a new fire truck into the station bay. This tradition honors the early days of firefighting when horse-drawn apparatus couldn't back into stations and had to be pushed in. It's a way to celebrate the arrival of new equipment, acknowledge the community's support, and honor the history of the fire service.

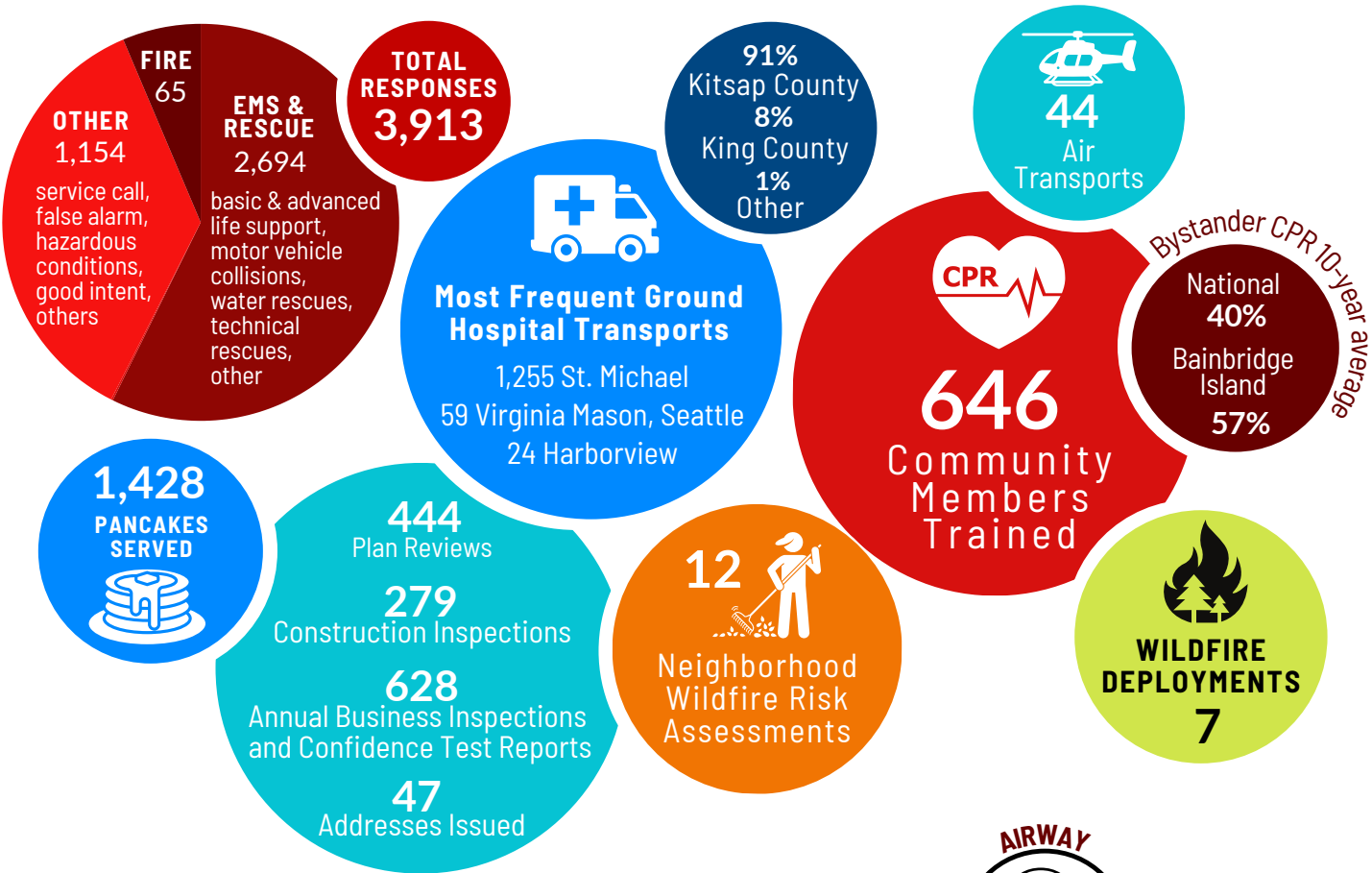
MEMBER RECEIVES AWARD FROM AMERICAN LEGION – DEPARTMENT OF WASHINGTON

FF/EMT Joe Gaffney will be recognized by the American Legion – Department of Washington as that organization's Humanitarian of the Year for Washington State in July. While off-duty on September 5th, 2024, FF/EMT Gaffney heard a dispatch for a distressed kayaker in Rich Passage on the island's southwest side. He immediately responded and was able to rescue the kayaker before other resources arrived. FF/EMT Gaffney's selfless actions demonstrate the highest level of commitment to the citizens of Bainbridge Island.



2024 BY THE NUMBERS

Your dedicated fire department has been actively serving our community throughout the past year, focusing on your safety and well-being in many important ways. Our commitment extends from responding to emergencies to proactively working to prevent them and engaging with our community.



Why are there so many vehicles at some EMS responses?

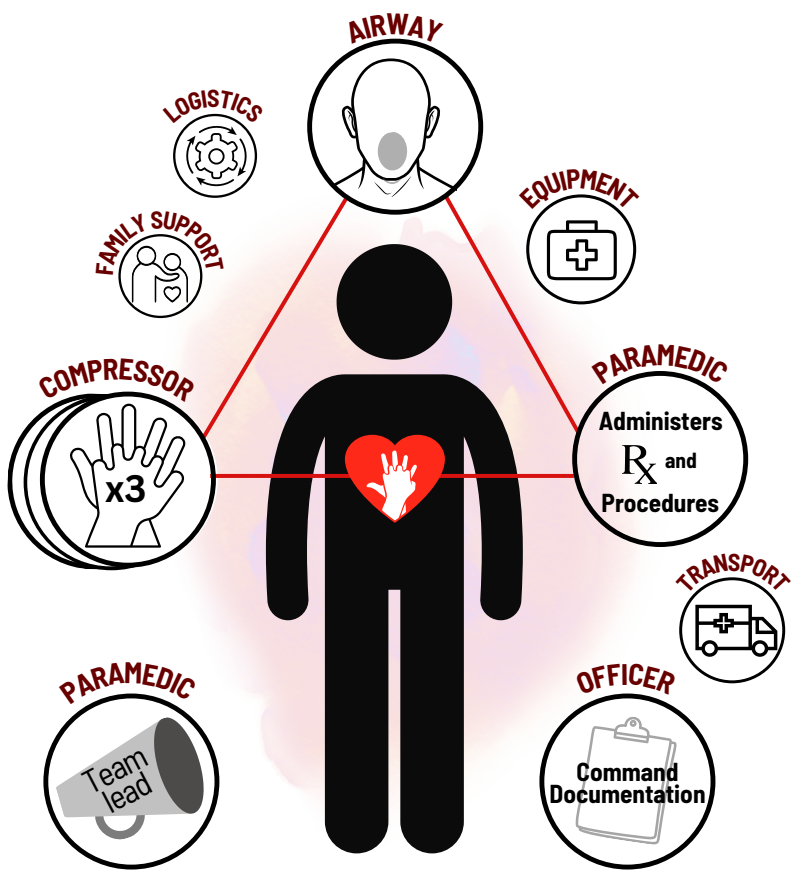
Did you know that each BIFD vehicle has a **minimum staffing** of only **2** responders?

Some calls for help require lifting patients up or down stairs. This may require more personnel to manage safely.

It takes at least **2** vehicles to bring **4** responders to a scene.

Car accidents and other rescues require additional resources. You may see **3** vehicles at those scenes.

CPR calls are one of our most resource-dependent responses. They require a minimum of **7** responders, arriving in **4** vehicles.



Roles filled at a CPR event



Bainbridge Island Fire Department
8895 Madison Ave NE
Bainbridge Island, WA 98110

ECRWSEDDM
LOCAL POSTAL CUSTOMER

Presorted
Standard Mail
U.S. Postage Paid
Livingston MT
Permit #2

CONTACT US



bainbridgeisland
firedepartment



(206) 842-7686



contact@bifd.org

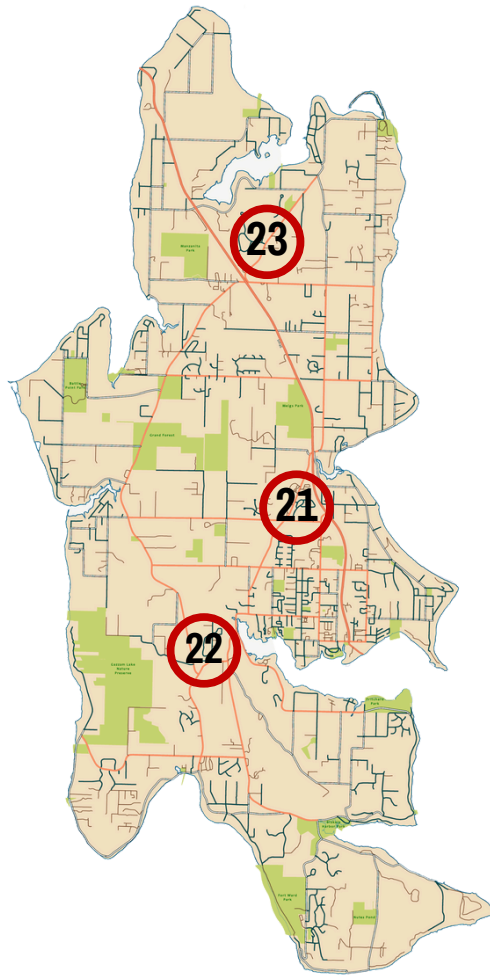


www.bifd.org



bainbridgeisland
firedepartment

LEARN MORE



OUR FIRE STATIONS

Station 21, 8895 Madison Ave NE

Headquarters & Administration

Business Office: 206-451-2038

Fire Marshal's Office: 206-451-2033

Community Outreach and

Public Education: 206-451-2031

General Inquiry: 206-842-7686

Station 22, 7934 NE Bucklin Hill Rd

Vehicle maintenance facility

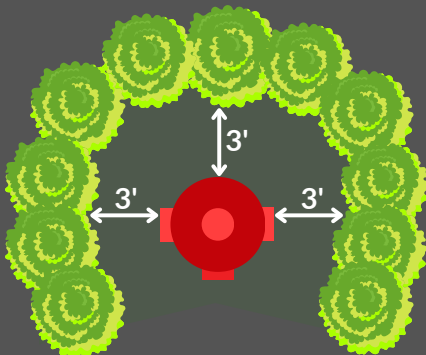
Station 23, 12985 Phelps Rd NE

Training facility

KEEP FIRE HYDRANTS CLEAR!

The ability to quickly access fire hydrants during a fire is critical – every second counts! If you have a fire hydrant adjacent to your property, we need your help.

Please keep at least 3 feet clear space in all directions.



BOARD OF FIRE COMMISSIONERS

All regularly scheduled Board of Fire Commissioners meetings are held at Station 21 on the second and fourth Wednesday of every month. The meetings commence at 4:30 PM, and the public is welcome to attend in person or online via Teams.

OUR CORE VALUES

Our core values guide our actions and shape our culture. These values are the fundamental beliefs and principles that we hold dear and that influence the way we interact with the public and each other. Our core values are:



Compassion



Trust



Stewardship



Innovation



Courage

Safeguarding lives, property, and the environment through prevention, education, and emergency response.